

**AWWA C508
RESILIENT DISC
CHECK VALVE**

**Model 9600
Ductile Iron • Class 125**



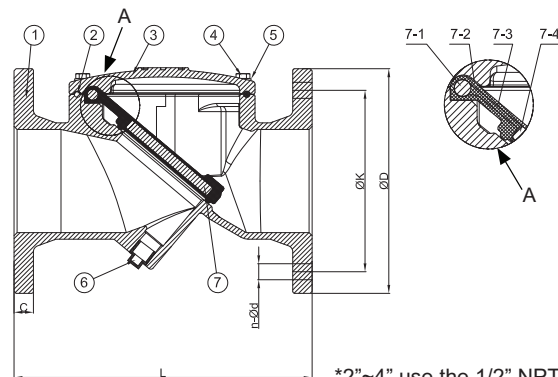
DIMENSIONAL DATA



| Size | Part No. (Flanged) | L | ØD | ØK | N-Ød | C |
|--------|--------------------|-------|------|-------|----------|------|
| 2" | 9600-120 | 8 | 6 | 4.74 | 4-3/4 | 0.75 |
| 2-1/2" | 9600-125 | 8.5 | 7 | 5.5 | 4-3/4 | 0.87 |
| 3" | 9600-130 | 9.5 | 7.5 | 6 | 4-3/4 | 0.95 |
| 4" | 9600-140 | 11.5 | 9 | 7.5 | 8-3/4 | 0.95 |
| 6" | 9600-160 | 14 | 11 | 9.5 | 8-7/8 | 1 |
| 8" | 9600-180 | 19.5 | 13.5 | 11.75 | 8-7/8 | 1.12 |
| 10" | 9600-200 | 24.5 | 16 | 14.25 | 12-1 | 1.18 |
| 12" | 9600-220 | 27.5 | 19 | 17 | 12-1 | 1.26 |
| 14" | 9600-240 | 31 | 21 | 18.74 | 12-1 1/8 | 1.38 |
| 16" | 9600-260 | 36 | 23.5 | 21.3 | 16-1 1/8 | 1.44 |
| 18" | 9600-280 | 36 | 25 | 22.75 | 16-1 1/4 | 1.57 |
| 20" | 9600-300 | 38.5 | 27.5 | 25 | 20-1 1/4 | 1.70 |
| 24" | 9600-340 | 43.25 | 32 | 29.5 | 20-1 3/8 | 1.90 |

Description:

1. The disc is precision molded with an integral O-ring type sealing surface, and contains alloy steel with nylon reinforcement in the flexible hinge area.
2. Manufactured with threaded port and a pipe plug on the bottom of the valve to allow for field installation of a back flow actuator.
3. Slamming and water hammer virtually non-existent due to it's short closing travel.
4. Full top-entry access for easy on-line inspection and maintenance.
5. Working Pressure:
250 psi/16 Bar
6. Working Temperature:
-10°C to 82°C (14°F to 180°F) for NBR coated trim
-10°C to 120°C (14°F to 248°F) for EPDM coated trim (optional)
7. Flange drilling to: ANSI 125/150 or EN1092-2 PN10 or PN16.
8. Internally and externally fusion bonded epoxy powder coated (FBE).
9. Manufactured in accordance with AWWA C508, MSS-SP-71.



*2"~4" use the 1/2" NPT plug
6"~24" use the 1" NPT plug

MATERIAL LIST

| NO. | DESCRIPTION | MATERIAL | ASTM Spec. |
|-----|----------------------|-----------------|-------------------------|
| 1 | Body | Ductile Iron | ASTM A536 65-45-12 |
| 2 | O-Ring | Rubber | NBR |
| 3 | Cover | Ductile Iron | ASTM A536 65-45-12 |
| 4 | Bolt | Stainless Steel | AISI 304 |
| 5 | Washer | Stainless Steel | AISI 304 |
| 6 | *Plug | Stainless Steel | AISI 304 |
| 7 | Disc | Steel & Rubber | Carbon Steel & NBR/EPDM |
| 7-1 | Bar | Stainless Steel | AISI 304 |
| 7-2 | Lining | Rubber | NBR/EPDM |
| 7-3 | Reinforcement Fabric | Nylon | Commercial |
| 7-4 | Disc Plate | Steel | Commercial |

Dimensions in inches
Design and materials are subject to change without notice.



WARNING: This product can expose you to chemicals including lead, which is known to the State of California to cause cancer and birth defects or other reproductive harm. For more information go to www.P65Warnings.ca.gov.



United Water Products
5355 Ramona Blvd., Jacksonville, FL 32205
TEL. 877-766-4459 FAX: 877-766-4458
Website: www.unitedwaterproducts.com

